



**Safer  
Lighter  
Stronger**

PN:BT153SY



# **Fitting Guide & Owners Manual**

## **TOYOTA Coaster**

### **01/ 2022**

Big Tube Bar  
VEHICLE FRONTAL PROTECTION SYSTEM (VFPS)  
FOR AIR BAG & ADR COMPLIANT VEHICLES



# Index

---

## Pages 3-5

ECB's Benefits  
Product Care

## Pages 6-7

Stage 1 - Vehicle Testing and Preparation  
Stage 2 -4 Bumper Removal  
Stage 5 - Front bolt removal  
Stage 6 - Mount installation

## Pages 8-9

Stage 7 - Mount installation (cont'd)  
Stage 8 - Indi/Park lights Electrics  
Stage 9 - Refit bumper  
Stage 10 - Number plate cover  
Stage 11 - Indi/park lights fitment  
Stage 12 - Clip lock trim

## Pages 10

Stage 13 - Protection bar fitment

## Pages 11-12

Final Checks & Fitting Kit  
Finished Product

## Pages 13-14

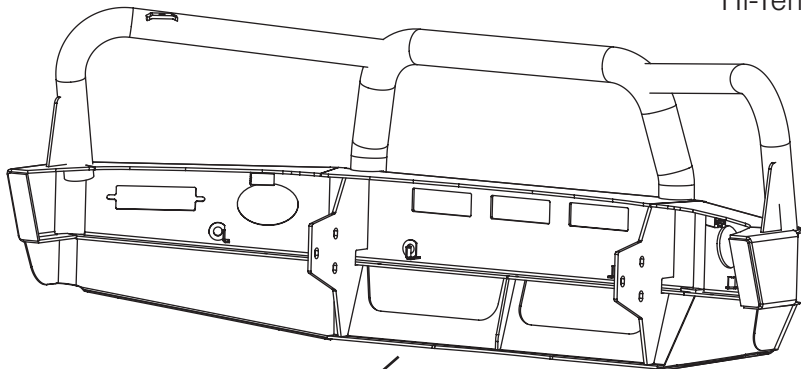
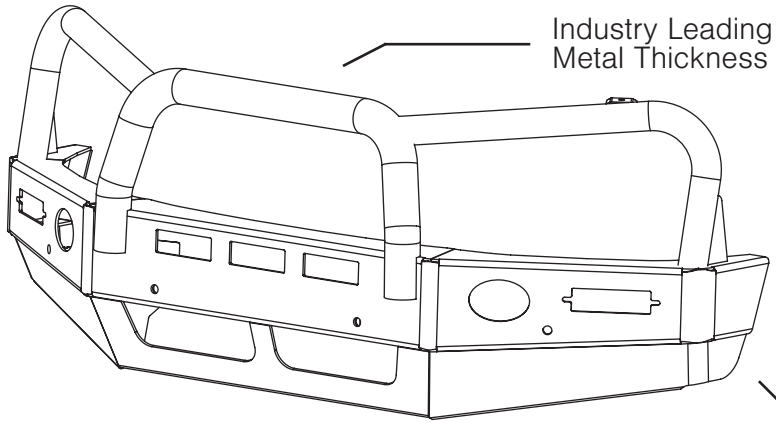
Warranty Registration

## Pages 15-16

Notes

# The Features of ECB

---



# ECB's Benefits

---

## **Built to Perform - Not to a Price**

ECB are proud to claim that their channels are not jigsaw puzzles that are bolted together, or even multiple sections welded together. Where any welding is required, it is done to the highest standards by qualified welders, not machines.

## **Anti-Corrosive Nature of Alloy**

The composition of ECB's alloy has a very high resistance to corrosion. Rust not only looks unappealing but greatly reduces the strength of the metal. Rust can and will weaken the structural integrity of a steel bullbar effectively rendering it useless over time.

## **Australian Made**

Established in 1971, we utilise decades of experience designing, engineering and building products in Australia to suit Australian conditions. We can ensure the best quality controls and help support the local economy and employ over 90 proud Australians.

## **Weight Saving Benefits**

An ECB alloy bullbar is typically half the weight of a steel bullbar. Unnecessary suspension upgrades are not required. The reduced weight also contributes to increased fuel economy and less wear and tear on tyres, suspension and braking components.

## **Welds That Work**

ECB uses only the strongest welds and welding techniques to ensure every product is as structurally sound as possible. MIG (Metal Inert Gas) welding techniques are employed ensuring the welds are as thick as the thickest section of alloy's being joined together.

## **Lifetime Warranty**

ECB provide a lifetime warranty and consumer guarantee on all of our manufactured products. This guarantee highlights the confidence in our ability and provides complete peace of mind for your purchase for the lifetime you own your vehicle.

# Product Care

---

## Polished Products

Being a premium mirror polished finish, regular maintenance will be required to keep that iconic ECB shine. We recommend using our own brand of Aluminium Polish. This formula has been tried and tested and in our opinion is the world's best standard.

**Directions:** Apply a small quantity of Aluminium Polish to a clean soft cloth and rub the metal surface. The longer the rubbing the brighter the surface becomes. Wipe off Aluminium Polish with clean soft cloth. Also suitable for motorised buffing machines.

**Note:** There are more specific details on the polish bottle. Please read before use.

## Powdercoated Products

Our powdercoated finishes are very low maintenance. Infact there is actually very little you will ever need to do for this product. Just clean it as you would your car and it will stay looking good as new.

## ECB Aluminium Polish

When you're looking for that showroom finish look for your polished automotive products, you can depend on the no compromise quality of East Coast Bullbars Aluminium Polish. This specifically designed product is the best polish available and we guarantee that this \$#!+ works. Within our decades of manufacturing polished alloy products we have trialed a large range of different polishes on the market and believe without a doubt that nothing beats the finish quality of East Coast Bullbars Aluminium Polish.

East Coast Bullbars Aluminium Polish is excellent for use by hand and is ideal for polished bullbars, nudge bar and stainless steel products. This polish will clean, polish and protect your product from the elements whilst bringing your products back to that showroom finish look.



# BT153SY

## Stage 1

- Test drive vehicle to ensure all driver assists are correctly working and to gauge effectiveness. Park on a flat level surface.
- Apply parking brake and lift bonnet.
- Unwrap ECB Protection bar and disconnect mounts. Discard bolts.
- Ensure these instructions are left with the vehicle owner and/or operator.



## Stage 2

- Remove the number plate.
- Remove the eyebrow mould from above the headlight each side by gently pulling forward.



## Stage 3

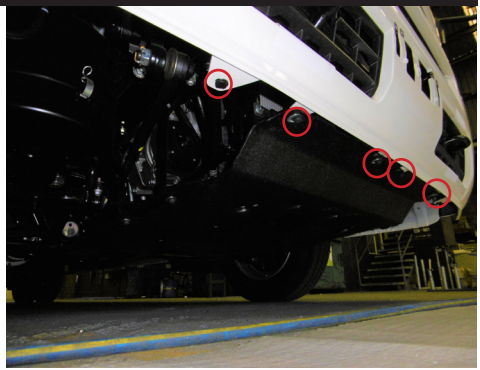
- Remove the centre bumper trim from the top of the grill under the badge.



# Toyota Coaster 01 - 2022 on

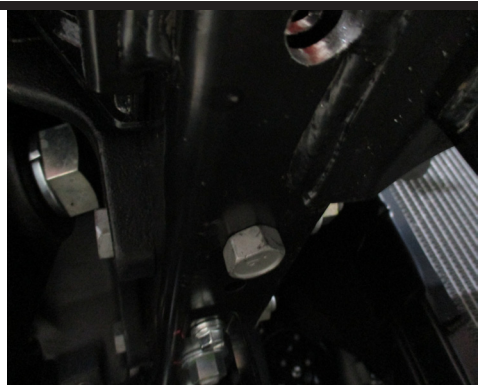
## Stage 4

- Remove four 10mm head bolts from the top of the grill, four clips and four 10mm head bolts from the underside of the bumper and one 10mm head bolt from beside the tow-hook each side.
- Pull outwards on the bumper sides to unclip from the retainer and remove the bumper and grill together.



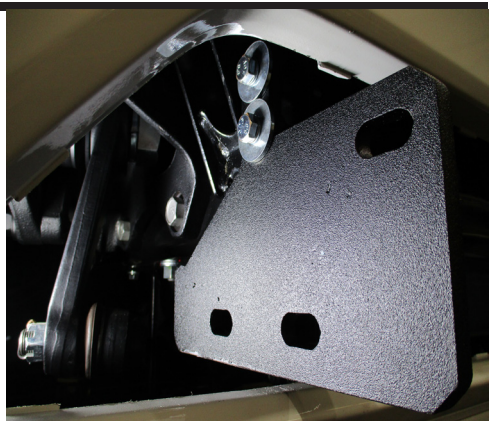
## Stage 5

- Remove front 19mm head bolt from the driver side chassis rail. Pull bolt through from top of rail.



## Stage 6

- Install the ECB steel chassis mount onto the chassis rail using M8 x 55 x 1.25 bolts, M8 spring washer and 5/16x11/4 washers through the top holes.
- On drivers side, fit M14 x 180 x 2.0 bolt, flat washers and M14 nyloc nut into the rear hole.
- For passengers side, install M14 x 40 x 1.5 bolt, M14 flat and spring washer and M14 x 1.5 nut only on wire.



# BT153SY

## Stage 7

- Using the mount as a guide, drill the front hole into the rail.

**Blow filings clear and treat all exposed metal with a rust inhibitor.**

- Fit 12 x 50 x 1.75 bolt, flat washer and spring washer and nut through the drilled hole.

**Note:** The passenger side does not use a flat washer under the nut.

- Align mounts and tighten all bolts.

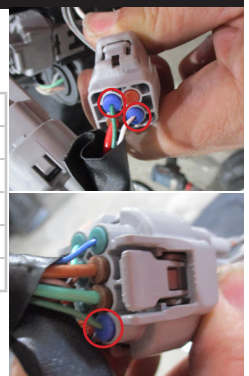


## Stage 8

- Splice ECB wiring harness into wiring harness behind headlight using cable locks (supplied). Ensure harness is clear of sharp edges and moving parts.

**NOTE:** Additional wire and solder joiners have been included in the fitting kit to allow extension of the light harness.

Light Wiring (4 Pin plug)		
Pin number	Colour	Use
2	Green	Indicator light
3	White/ Black	Ground
(8 pin plug)		
1	Dark Green	Parking light



**NOTE:** Wiring information in this instruction is correct to the vehicle at the time of development. Please check the wiring on your vehicle to ensure correct installation.

## Stage 9

- Re-fit the plastic trim using the original fasteners.





# Toyota Coaster 01 - 2022 on

## Stage 10

- Fit alloy number plate cover onto bumper in place of the number plate using M6 x 25 black combo screws.



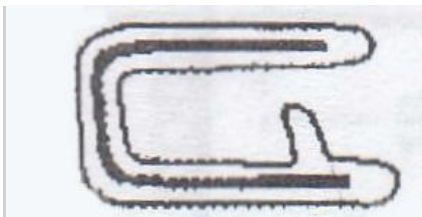
## Stage 11

- Fit ECB LED indicator / park lights into protection bar as per instructions supplied with the LED indicator kit.



## Stage 12

- Attach 6mm clip lock trim (supplied) to top of ECB protection bar. NOTE: Trim off lower edge on an angle so trim will sit flush with end of protection bar.



# BT153SY

## Stage 13

- Fit ECB protection bar onto the steel chassis mount using supplied three (3) M12 x 1.75 x 40mm bolts, flat washers, spring washers and nuts (per side).
- Align the protection bar to the vehicle and tighten all bolts.
- Connect and check correct operation of Indi/Park lights and safety features.



# Final Checks & Installation Kit

## Ensure Number Plate is Clearly Visible

Note: When fitting/refitting the licence plate to the vehicle, ensure there is no obstruction to licence plate vision in accordance with local authorities. If required relocate licence plate to an alternate location.

## Further VFPS Notes

1. Do not attach VFPS to the vehicle using anchorages not intended for this purpose (e.g. engine mounting bolts).
2. Do not use this product for any vehicle make or model, other than those specified by the VFPS manufacturer.
3. Do not remove the plaque or label from the VFPS.
4. Do not modify the structure of the VFPS in any way.
5. No accessory or fitment should project forward of the VFPS forward profile.
6. **Ensure these instructions are left with the vehicle owner and/or operator.**

## Important Information

Periodically check bolts and nuts for correct tightness, especially if traveling on rough roads.

## Installation Kit

1 - Pair ECB steel mounts	16 - M12 Flatwashers
1 - number plate cover	8 - M12 x 1.75 Nuts
1 - M14 x 2 x 180mm Bolt	4 - M8x55mm Bolts
1 - M14 x 1.5 x 40mm Bolt	8 - 5/16 x 11/4 Flat washers
3 - M14 Flat washers	4 - M8 Spring washers
1 - M14 Spring washer	2 - M6 black combo screws
1 - M14 nyloc nut	1 - ECB ind/Park Kit (ICLED104ECB)
1 - M14 x 1.5 Nut only on 300mm wire	2 - 250mm Length 3 core wire
2 - M12 x 1.75 x 50mm Bolts	6 - Solder joiners
6 - M12 x 1.75 x 40mm Bolts	6 - Cable locks
8 - M12 Spring washers	1 - Length 2200mm 6mm clip lock trim

# Finished Product

---



# Warranty Registration

---

## Contact Details

Name: \_\_\_\_\_

Address: \_\_\_\_\_

\_\_\_\_\_

Product: **BT153SY**

Email: \_\_\_\_\_

Phone: \_\_\_\_\_

Work Order Number: \_\_\_\_\_

You can find this on the silver label  
of your ECB product.

By submitting this registration you automatically subscribe to ECB's mail outs.  
You can unsubscribe at any time.

## Register Online

For online registration please go online to [www.ecb.com.au/warranty-registration](http://www.ecb.com.au/warranty-registration)  
If you have any questions please contact our national office on 1800 069 145 or  
[www.ecb.com.au](http://www.ecb.com.au).

## Or Post To:

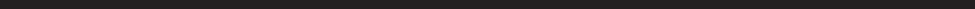
PO Box 122, Margate, QLD 4019



**PN: BT153SY**

**Please post to: PO Box 122,  
Margate QLD 4019**

# Notes

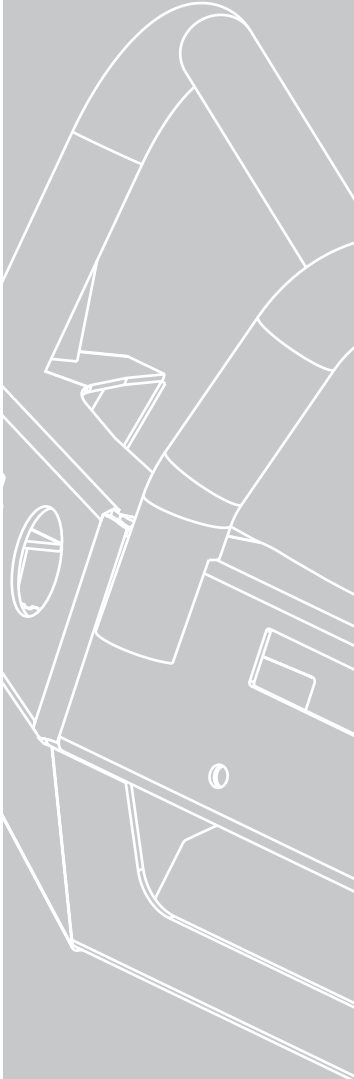


A series of 18 horizontal lines spaced evenly down the page, providing a template for handwritten notes.

\_\_\_\_\_   
 Full Name

\_\_\_\_\_   
 Date

REPLACES: N/A  
REVISED: 16.12.22



# **Safer Lighter Stronger**

1800 069 145  
[www.ecb.com.au](http://www.ecb.com.au)

29 Snook St, Clontarf QLD 4019  
PO Box 122, Margate QLD 4019